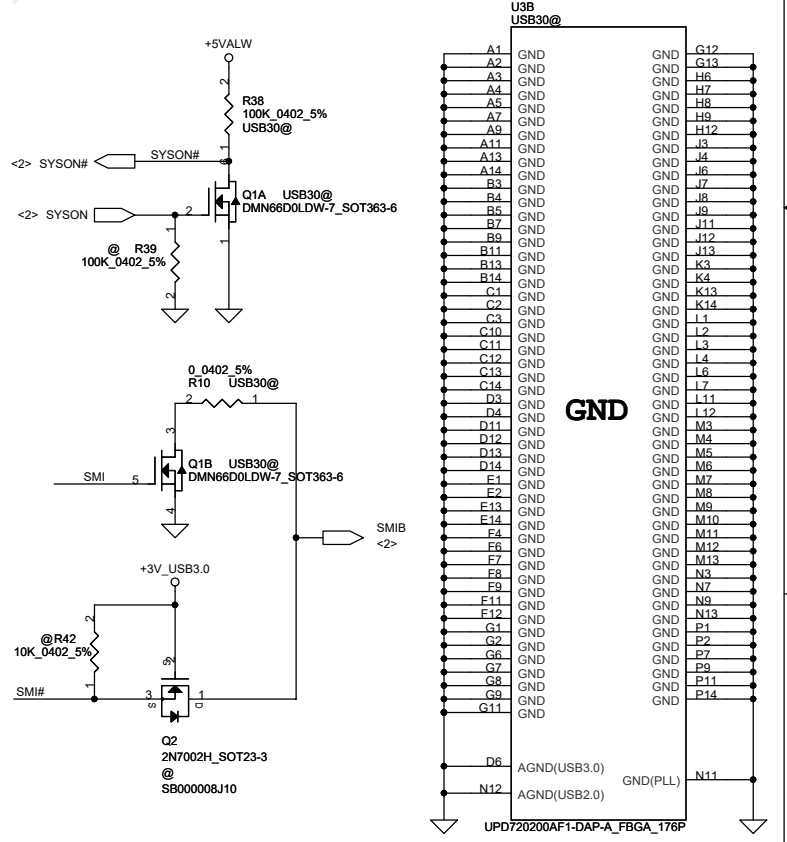
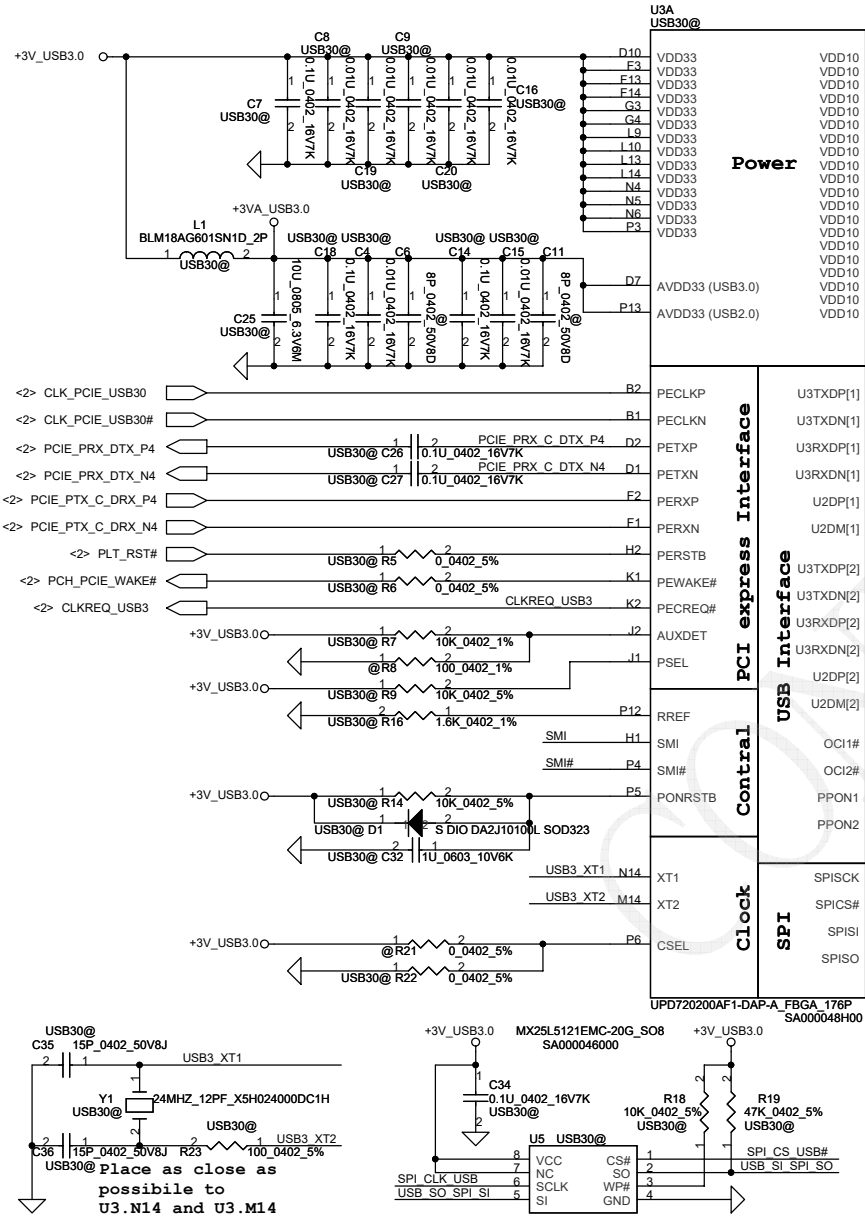
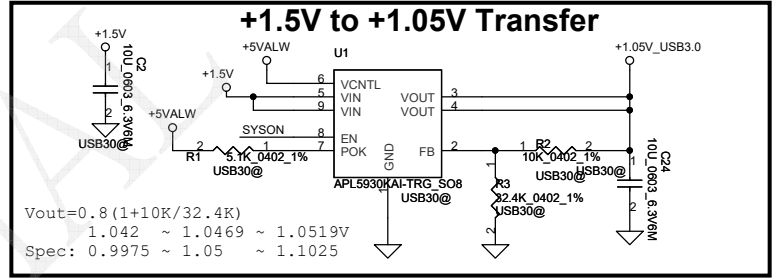
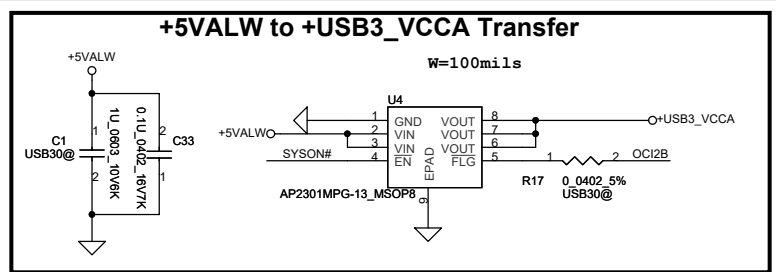
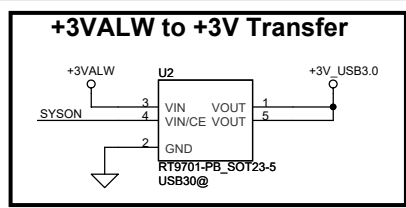


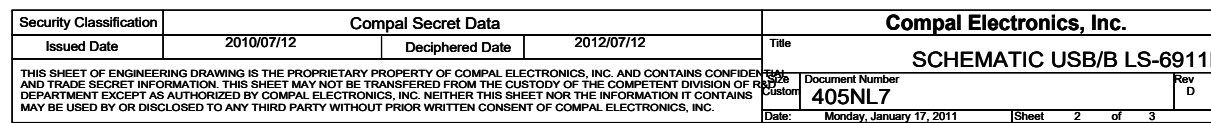
COMPAL CONFIDENTIAL

MODEL NAME: P7YE0/E3  
PCB NAME: LS-6911P USB/B  
COMPAL P/N: DA80000LD10  
REVISION: 1.0  
DATE: 2010/11/15

PCB 0HO LS-6911P REV0 USB3.0/B  
DA80000LD10  
FPC 12P H P1 PAD.65 158.5MM USB2.0/B-M/B  
NBS0000VA00  
45USB20@



Security Classification		Compal Secret Data		Compal Electronics, Inc.	
Issued Date	2010/07/12	Deciphered Date	2012/07/12	Title	
THIS SHEET OF ENGINEERING DRAWING IS THE PROPRIETARY PROPERTY OF COMPAL ELECTRONICS, INC. AND CONTAINS CONFIDENTIAL AND TRADE SECRET INFORMATION. THIS SHEET MAY NOT BE TRANSFERRED FROM THE CUSTODY OF THE COMPETENT DIVISION OF R&D DEPARTMENT EXCEPT AS AUTHORIZED BY COMPAL ELECTRONICS, INC. NEITHER THIS SHEET NOR THE INFORMATION IT CONTAINS MAY BE USED BY OR DISCLOSED TO ANY THIRD PARTY WITHOUT PRIOR WRITTEN CONSENT OF COMPAL ELECTRONICS, INC.				Document Number	405NL7
				Date	Monday, January 17, 2011
				Sheet	1 of 3



2010/08/27

- 1.Change U5 EEPROM from ATMEL(SA000010100) to MXIC(SA000046000)
- 2.Change U4 USB Power Switch from APL3510(SA000048W00) to DII AP2301MPG(SA00003XM00)
- 3.Change U3 UPD720200F1(SA000048H00) to UPD720200AF1(SA000048H10)
- 4.Add Q1 2N7002H(SB000008J10) for SYSON to SYSON#
- 5.Change L2,L3,L4,L5 from 90ohm(SM070001310) to 12ohm(SM070001600)
- 6.Change C31 to 4.2H OSCON (SF000002Y00)
- 7.Reserve C40 B2 150U

2010/08/30

- 1.Change U3 Symbol
- 2.Change Value for C20/C9/C19/C8/C21/C22/C10/C12/C23/C13

2010/09/06

- 1.Change D2 / D5 for NEW ESD P/N

2010/09/17

- 1.remove D2/D5 Add D6

2010/09/24

- 1.Add R43 / R44 / R45 / R46 pull down

2010/09/28

- 1.Change D1 from ROHM SC1SS355010 to Panasonic SC100005E00
- 2.Change C35/C36 from 12pF to 15pF

2010/10/04

- 1.Pop R19 for EON EEPROM

2010/10/15

- 1.Change SROM Power to +3V\_USB30

2010/10/20

- 1.Change U3 to MP P/N SA000048H00

2010/10/23

- 1.Add H6 for ME update

2010/11/15 REV1.0

- 1.Change R17 to 0 ohm

2010/11/26

- 1.unpop ESD diode D6

THIS SHEET OF ENGINEERING DRAWING IS THE PROPRIETARY PROPERTY OF COMPAL, INC. AND CONTAINS CONFIDENTIAL AND TRADE SECRET INFORMATION. THIS SHEET MAY NOT BE TRANSFERRED FROM THE CUSTODY OF COMPETENT DIVISION OF R&D DEPARTMENT EXCEPT AS AUTHORIZED BY COMPAL ELECTRONICS, INC. NEITHER THIS SHEET NOR THE INFORMATION CONTAINS MAY BE USED BY OR DISCLOSED TO ANY THIRD PARTY WITHOUT PRIOR WRITTEN CONSENT OF COMPAL ELECTRONICS, INC.

Compal Electronics, Inc.		
Title SCHEMATIC,USB/B LS-6911P		
Size A4	Document Number 405NL7	Rev D
Date: Monday, January 17, 2011		Sheet 3 of 3